

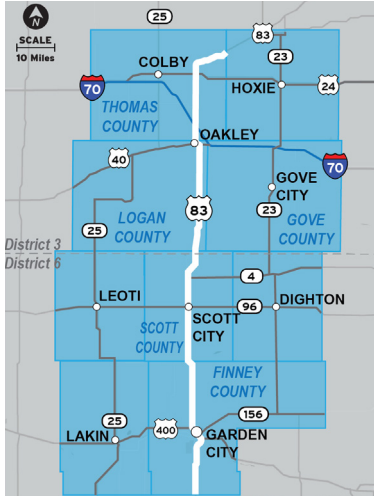
US 83 ADVANCED TECHNOLOGY PROJECT

Thomas, Logan, Gove, Scott, and Finney Counties



Summer 2024

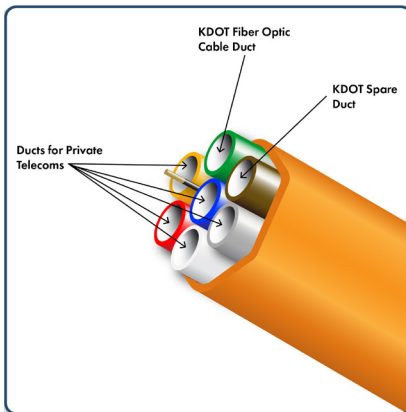
Visit the project webpage.



Project Description

US 83 is a critical rural freight corridor for western Kansas serving a variety of industries including agriculture, energy and livestock. Expanding transportation opportunities along the US 83 corridor will improve economic productivity as well as the safe and efficient movement of agriculture products and other freight, benefiting everyone who travels on the corridor.

The Great Plains Rural Freight Technology Corridor Project (US 83 Advanced Technology) will utilize technology aimed at improving safety and economic productivity along US 83. The project limits extend approximately 131 miles, from the Thomas/Sheridan county line south to the Finney/Haskell county line.



► Phase 1: Fiber Optic Cable Installation

Install fiber optic cable and 7-way conduit to promote future rural broadband expansion along US 83 between Garden City and I-70.

► Phase 2: Technology Deployment

Install and deploy advanced Intelligent Transportation System (ITS) technologies including Connected Vehicle (CV) technology along the corridor and enhanced software.

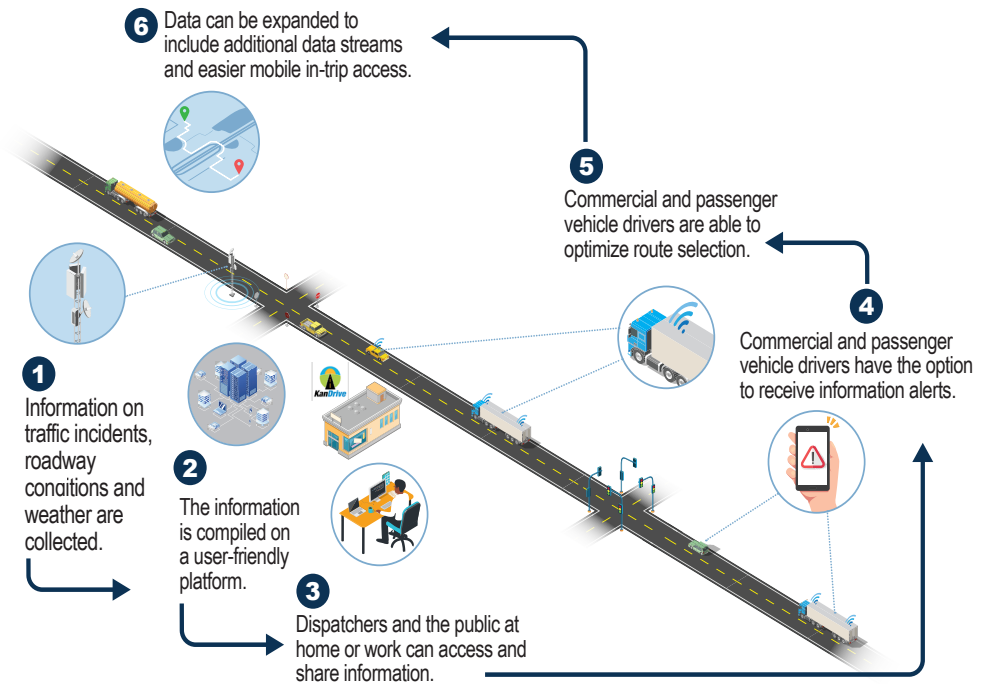


Image depicts how advanced technology works and is not meant to represent technology on US 83.

Project Contact Information:

Lisa Mussman,
Northwest Public Affairs Manager
Lisa.Mussman@ks.gov

Yazmin Moreno,
Southwest Public Affairs Manager
Yazmin.Moreno@ks.gov

For more information, please visit <https://ike.ksdot.gov/us-83-connected-vehicle-project>. This information can be made available in alternative accessible formats by contacting 785.296.3585 Voice/Hearing Impaired-711.



US 83 ADVANCED TECHNOLOGY PROJECT

Thomas, Logan, Gove, Scott, and Finney Counties



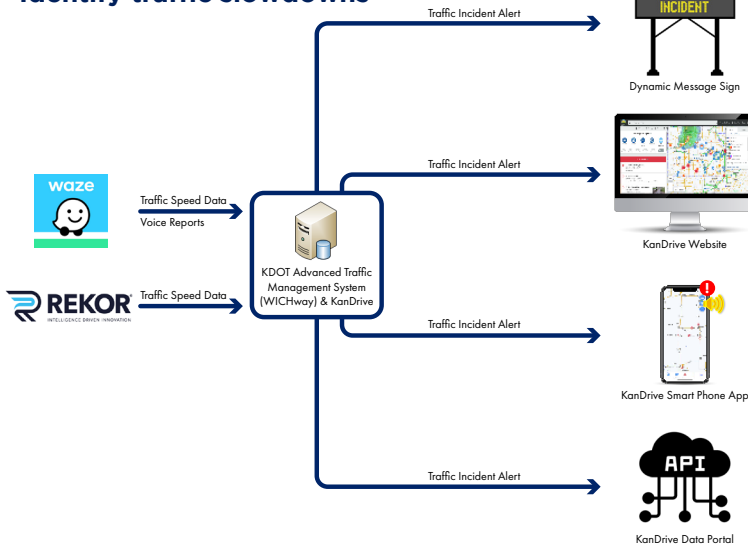
Summer 2024

Visit the project webpage.

► Proposed System Updates

KanDrive and KalTS Software Enhancements

Identify traffic slowdowns



Oversize Vehicle Tracking



Enhanced KanDrive Interfaces



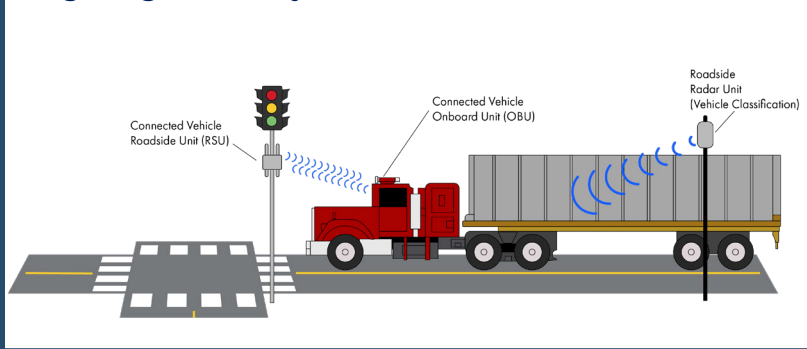
Public Incident Reporting

Work Zone Data Sharing Enhancements



Hardware Deployment

Freight Signal Priority



Electronic Signs, Roadway Weather Information Systems and Cameras



Project Contact Information:

Lisa Mussman,
Northwest Public Affairs Manager
Lisa.Mussman@ks.gov

Yazmin Moreno,
Southwest Public Affairs Manager
Yazmin.Moreno@ks.gov

For more information, please visit <https://ike.ksdot.gov/us-83-connected-vehicle-project>. This information can be made available in alternative accessible formats by contacting 785.296.3585 Voice/Hearing Impaired-711.