



Dwight D. Eisenhower State Office Building
700 S.W. Harrison Street
Topeka, KS 66603-3745

Calvin E. Reed, P.E., Secretary
Mark Hurt, P.E., Chief

Phone: 785-296-3531
Fax: 785-296-6946
kdot#publicinfo@ks.gov
<http://www.ksdot.gov>
Laura Kelly, Governor

August 2nd, 2024

Message to Oversize Load Carriers Concerning Location Reporting U.S. 83 Advanced Technology Project

The Kansas Department of Transportation (KDOT) was awarded a \$6.7 million grant from the Federal Highway Administration to build and deploy innovative freight technologies along a 131-mile stretch of U.S. 83 in western Kansas. The purpose of this project is to improve safety for freight carriers and motorists as well as improve economic productivity from the southern Finney County line to the east Thomas County line, a key freight transport route in Kansas.

One of the technological improvements will provide information to the public on oversize load locations along this section of U.S. 83 corridor. Carriers will be required, through their permit, to use a smartphone app to transmit and share their vehicle's current location, length, width and height on KDOT's public traveler information website, www.KanDrive.gov, and public mobile app.

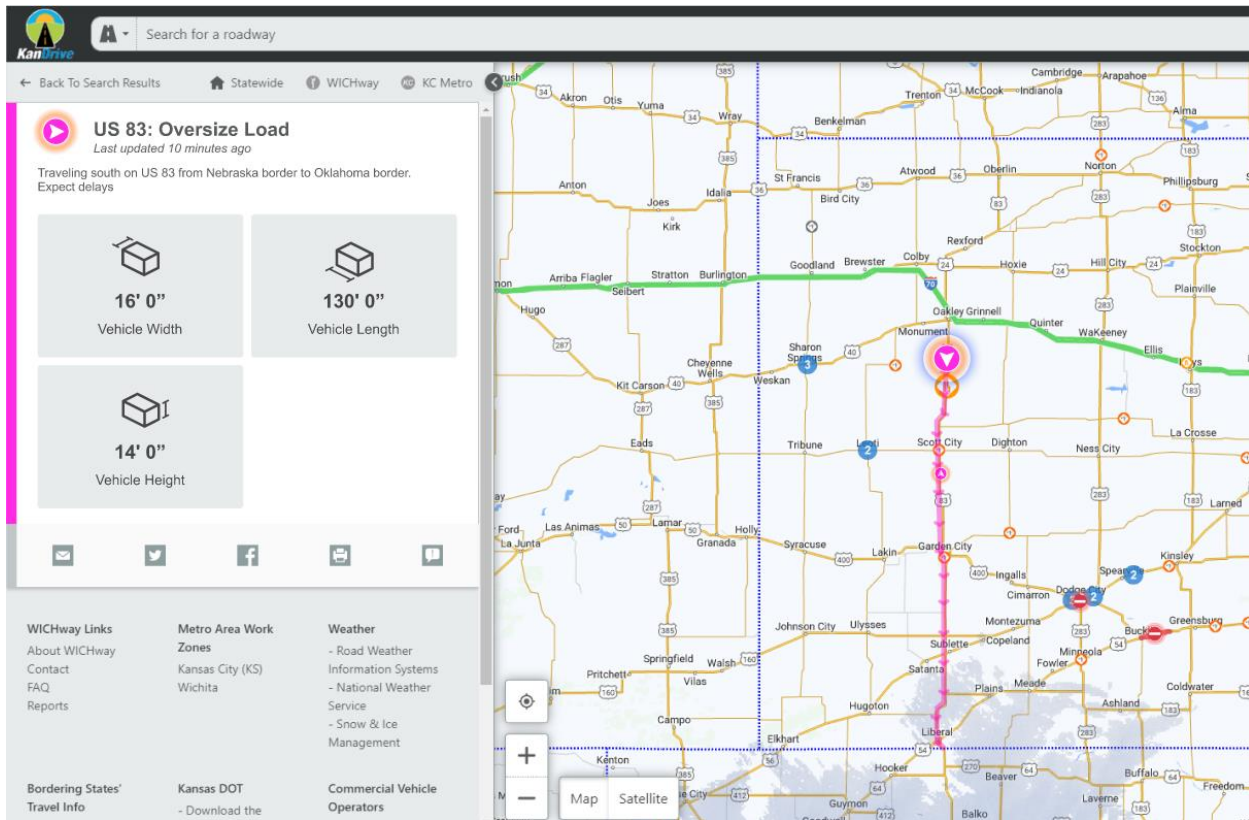
The goal is to improve safety for freight carriers by reducing queuing of traffic. This will help reduce risky passing maneuvers by keeping the public informed and allowing plans to be adjusted in advance of travel. A project advisory group of freight operators and other business leaders identified oversize vehicles as one of the most significant concerns impacting travel in the corridor.

Key factors of the technology being implemented include:

- The oversize vehicle's current location, width and length will be shown on the KanDrive public website and app.
- No other vehicle or personal information of the carrier will be shared.
- Loads that are 14 feet or wider, or 126 feet or longer, will be required to share their location with the public while on U.S. 83.

This fall, oversize load carriers meeting the above criteria and traveling on U.S. 83 will see new instructions on their permits to download and start using the new KanDrive app to share their location. Details on how to use the new KanDrive app will also be included on the Kansas Truck Routing and Intelligent Permitting System (K-TRIPS) website.

How will location sharing on the app work? When beginning a trip that includes traveling on this section of U.S. 83, the driver will input their permit number to enable the location sharing functionality. When the location sharing is initiated on the KanDrive app and the vehicle is traveling on U.S. 83, only the vehicle location and permitted width/length/height will be displayed. While the oversize vehicle is traveling on routes other than U.S. 83, the vehicle location is only monitored. Once the vehicle enters the U.S. 83 corridor, it will typically be displayed on KanDrive as shown below.

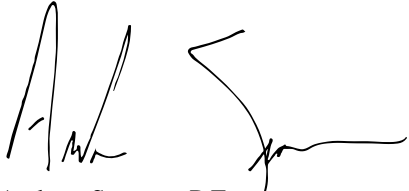


The vehicle location will not be shown when the carrier is not on U.S. 83, and the location data will not be saved. When the vehicle exits the U.S. 83 corridor, the location will be automatically removed from the public website and app.

Other technology enhancements included in this project that will benefit freight carriers over the next few years are:

- Freight signal priority at traffic signals.
- Additional weather monitoring sensors for limited visibility and high wind warnings.
- Dynamic message signs with travel condition information.
- Additional cameras on KanDrive’s website.
- Voice activated messages for simpler incident reporting.

In conclusion, the purpose of this project is to improve safety and efficiency for all motorists along this section of U.S. 83. More information about the project can be found at: [U.S. 83 Advanced Technology Project - KDOT IKE Program \(ksdot.gov\)](http://ksdot.gov). If you have questions, please contact KDOT’s Central Permitting Office at 785-368-6501.



Andrew Spencer, P.E.
 Bridge Evaluation and Management Engineer