



Oregon Department of Transportation

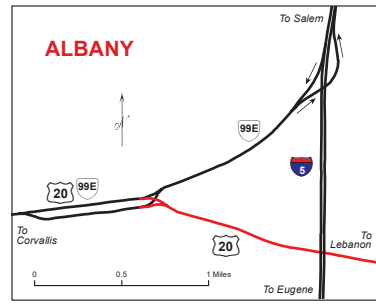
# Route Map 9

## Transportation Permit Unit

Authorized routes for loads not wider than 14 feet  
if gross weight does not exceed 98,000 pounds

Revised December 2023

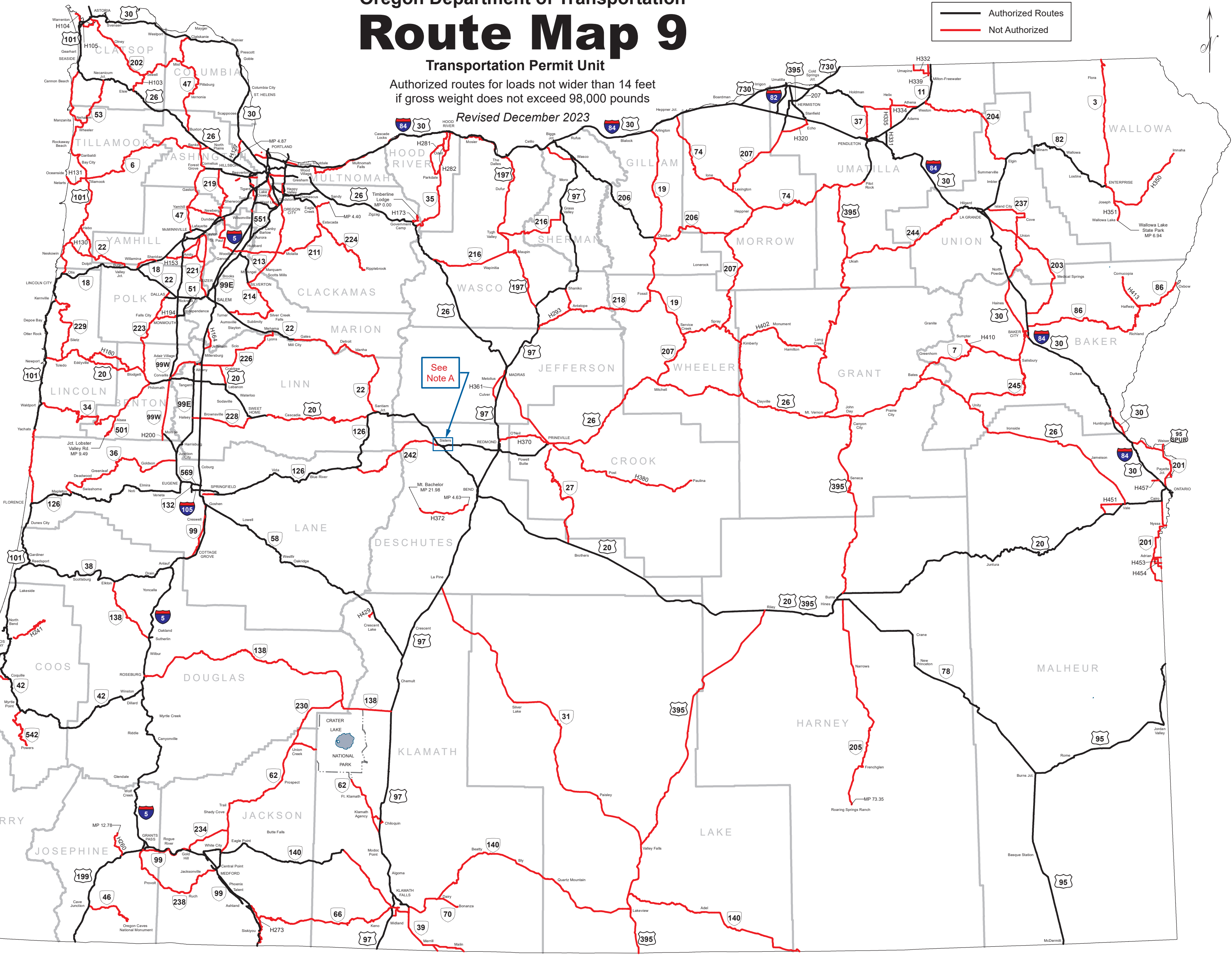
	Authorized Routes
	Not Authorized



### NOTE A

The movement of two wide loads each exceeding 12 feet in width traveling in opposing directions through the City of Sisters is not allowed through a six block section of the downtown merchant area between South Pine Street and South Larch Street due to horizontal width constraints. The lead pilot vehicle operator is responsible for ensuring that there are no oversize loads over 12' in width entering this restricted section from the opposite direction before the permitted vehicle enters the width restricted section. Pilot vehicles escorting wide loads exceeding 12' in width must announce their approaching presence on CB radio channel 17 prior to entering the six block section of the downtown merchant area between South Pine Street and South Larch Street. In the event of an oncoming oversize load, one of the lead pilot vehicle operators must direct his piloted load to wait and allow the approaching oversize load to pass safely before proceeding.

See Note A



Route Map 9 - Displays authorized annual routes for Over Width (up to 14' wide) and/or Heavy Haul loads (not exceeding 98,000 lbs. gross and Weight Table 3 maximums). Operations by permit only.

